

Atlantic County

Division of Economic and Demographic Research

Office of Research & Information

New Jersey Department of Labor and Workforce Development

February 2026

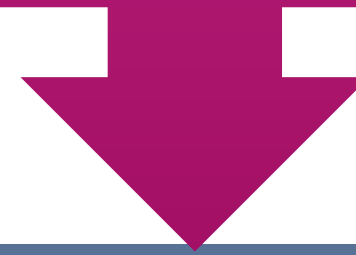


TABLE OF CONTENTS

Who Are We?	3
Purpose and Highlights	4
Demographic and Housing Characteristics	5
Economy	12
Job Postings	25
Takeaways	38
2025-2026 NJDOL Publications	44
Join Our List	45

**WHO ARE
WE?**

New Jersey Department of Labor
Office of Research and Information



Division of Economic and Demographic
Research

SDC

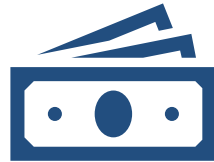
BLS

LMI

The purpose of this report is to highlight the key demographic and economic trends in the county



Atlantic County's population is **older and less diverse** than the state average, with a lower proportion of residents holding a bachelor's degree or higher.



Atlantic County's real GDP ranks 14th among all New Jersey counties. **Unemployment** in Atlantic County follows state trends but stays above the New Jersey average due to its seasonal tourism and agriculture industries.



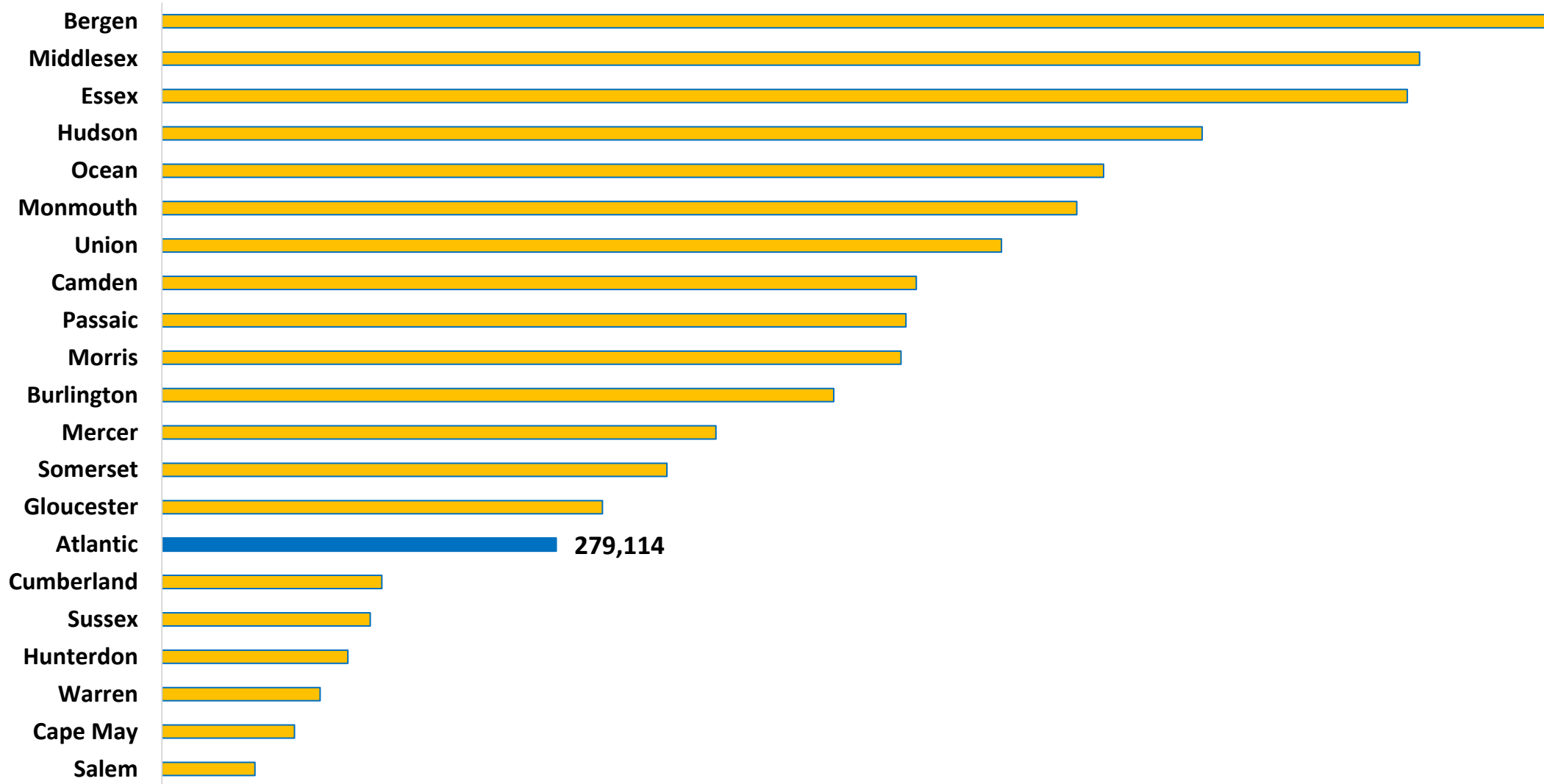
The **top** occupations in demand include Retail Salespersons, Registered Nurses, First-Line Supervisors of Retail Sales Workers, Heavy and Tractor-Trailer Truck Drivers and Customer Service Reps.



DEMOGRAPHIC AND HOUSING CHARACTERISTICS

Atlantic County's population was 279,114 in 2024.

Population Estimates by County in New Jersey, 2024



Atlantic County’s population is older and less diverse than the state overall.

Demographic Characteristics

Indicator	Atlantic County	New Jersey
Median Age	42.6	40.1
% of Older Population (65+)	21.1%	18.0%
% of Language Other Than English Spoken at Home	27.2%	34.3%
% of Foreign-Born Population	17.1%	25.0%
% of Hispanic or Latino (of Any Race)	21.3%	23.5%

The share of Atlantic County residents with some college (no degree) is 3.7 percentage points above the state average.

Educational Attainment (Population 25 Years and Older)

Indicator	Atlantic County	New Jersey
High School or Equivalent Degree	32.1%	24.7%
Some College, No Degree	18.2%	14.5%
Associate's Degree	8.0%	6.6%
Bachelor's Degree or Higher	31.1%	44.5%
High School Degree or Higher	89.4%	90.3%

Atlantic County has a lower median household income and a higher poverty rate compared to the state overall.

Income & Poverty

Indicator	Atlantic County	New Jersey
Median Household Income	\$75,109	\$104,294
% of Poverty	10.7%	9.2%

Note: Median Household Income in the Past 12 Months (in 2024 Inflation-Adjusted Dollars)

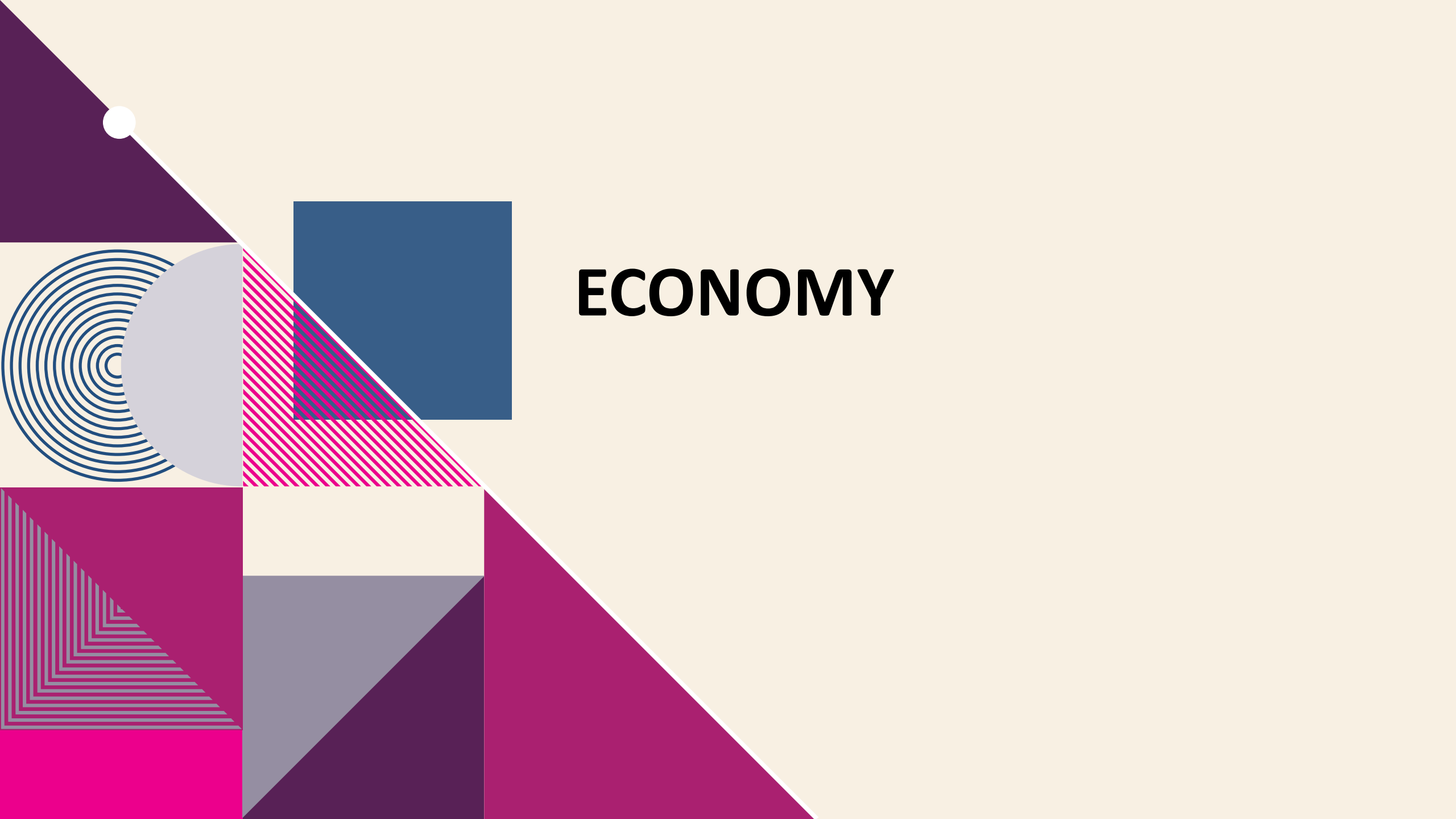
Atlantic County residents pay lower rent and have a higher homeownership rate compared to the state average.

Housing Characteristics		
Indicator	Atlantic County	New Jersey
Total Households	110,783	3,543,944
Median Gross Rent	\$1,433	\$1,800
Homeownership Rate	72.0%	63.9%
% of Housing Value of Owner Occupied (≥\$300,000)	55.3%	80.7%

Atlantic County residents have shorter commute times, and a lower percentage of remote workers compared to the state average.

Commuting Characteristics

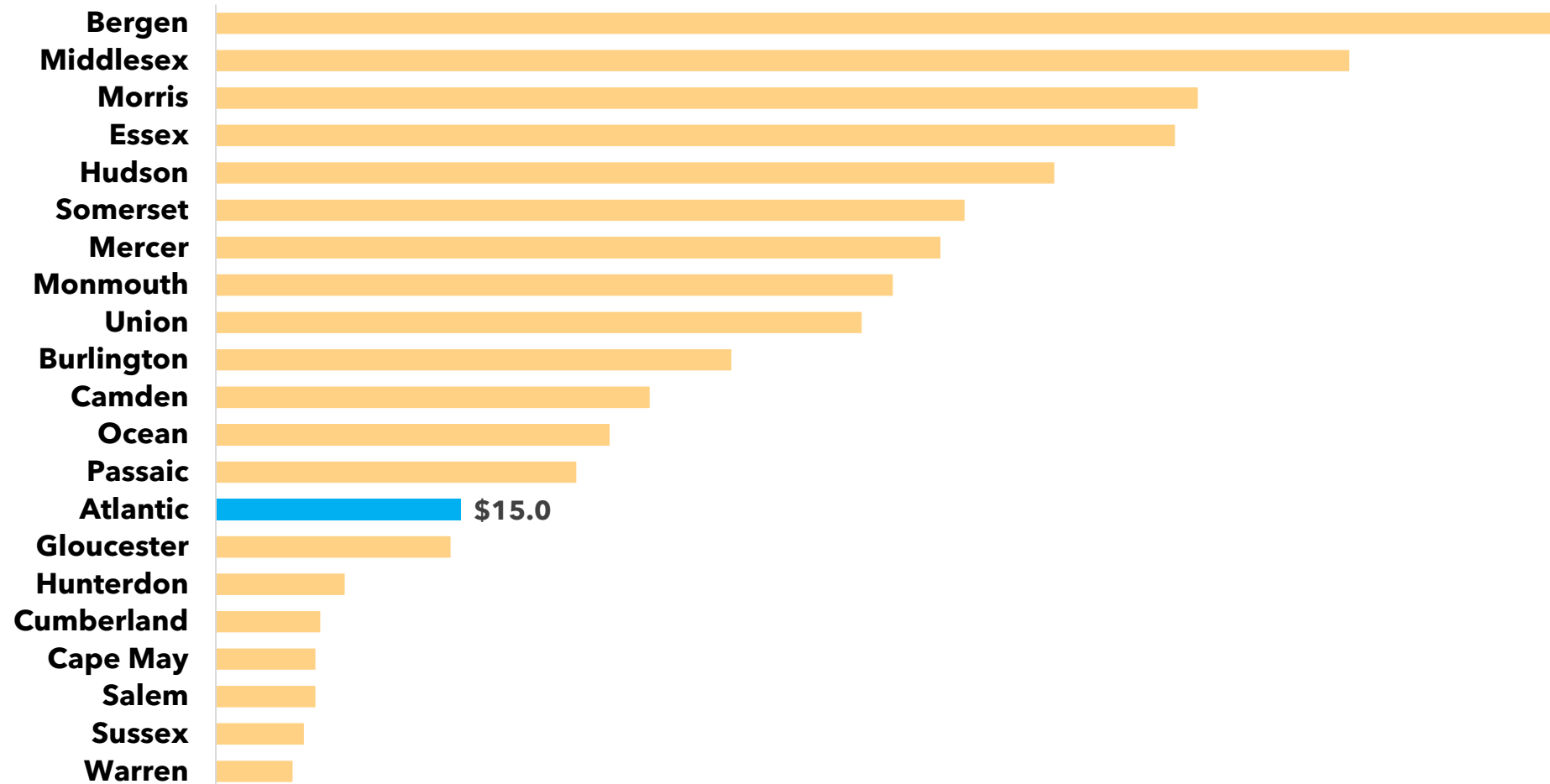
Indicator	Atlantic County	New Jersey
Average Travel Time to Work (in Minutes)	26.4	31.9
% of Public Transportation	3.6%	9.7%
% of Working From Home	7.2%	13.5%

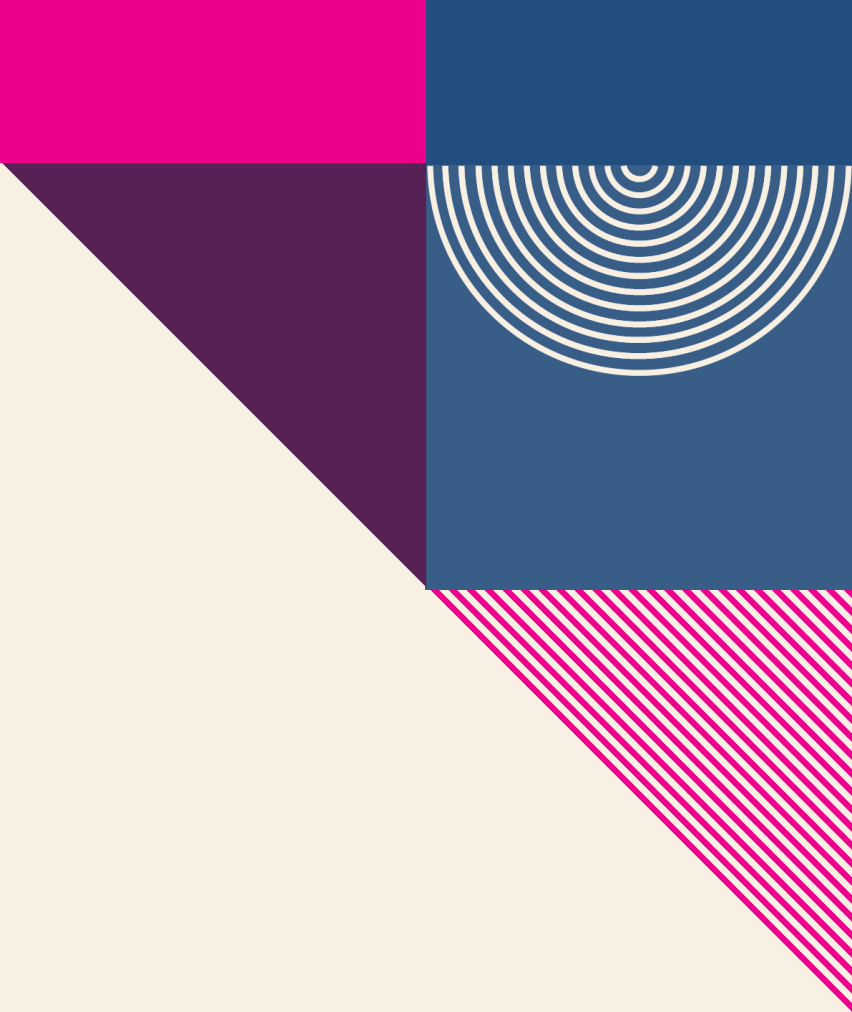


ECONOMY

In 2023, Atlantic County's real GDP was \$15.0 billion, ranking 14th among all New Jersey counties.

Real Gross Domestic Product (GDP) by County in New Jersey, 2023
(\$, in billions)





Establishments and Employment

Atlantic County

Source: Quarterly Census of Employment and Wages (QCEW) program, 2018 and 2024 Annual Averages

The QCEW program produces quarterly and annual data on the number of establishments, total employment, and wages for workers covered by New Jersey unemployment insurance (UI) laws, as well as federal employees under the Unemployment Compensation for Federal Employees (UCFE) program. This data is published at various geographical and industry levels.

22.3% of Atlantic County establishments are in health care and social assistance.

Atlantic County Establishments, Ranked by Percent of the Total Establishments Total Private Ownerships

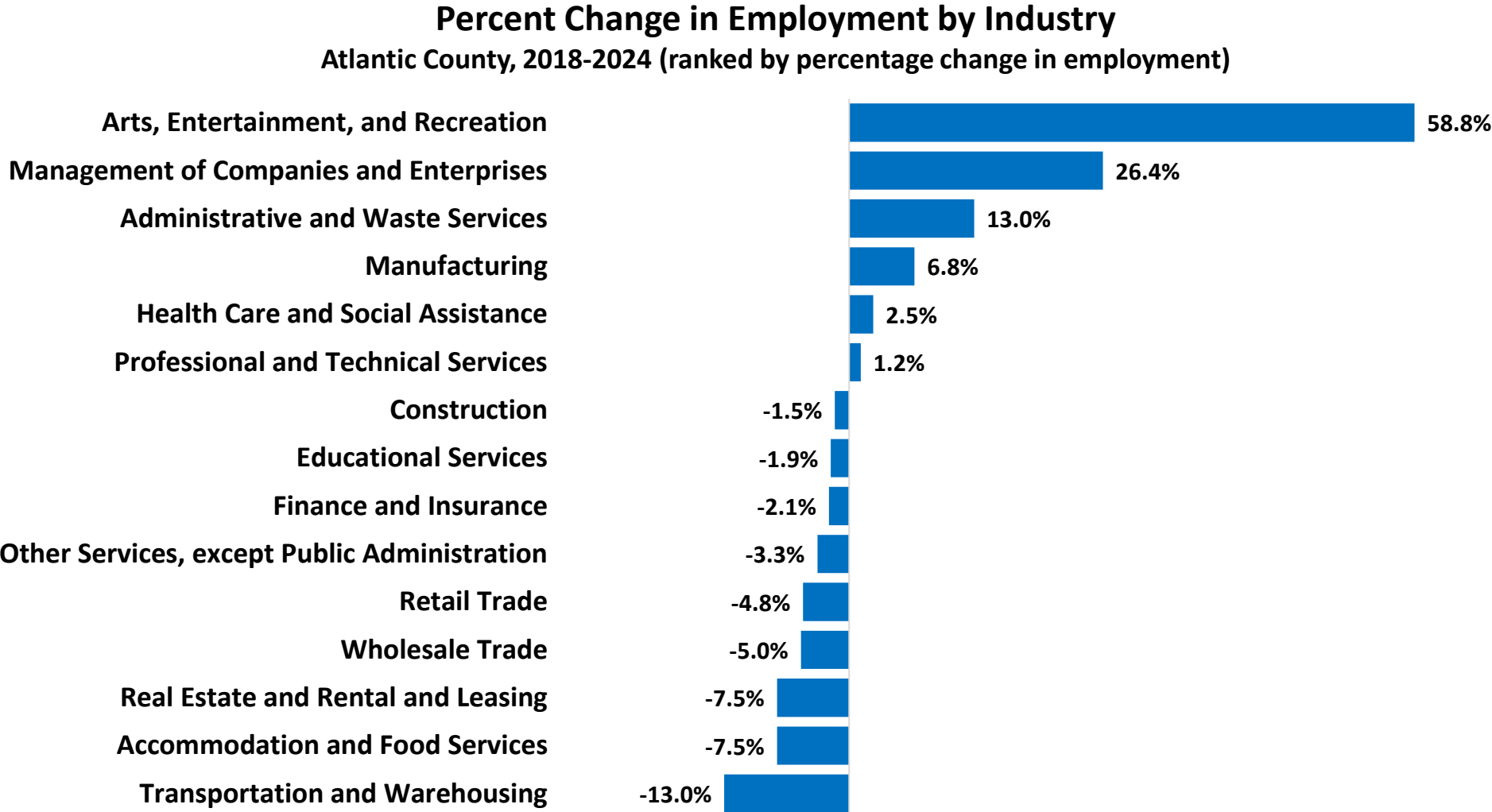
Industry	Total Number of Establishments	Total Number of Employees	% of Total Establishments
Health Care and Social Assistance	1,571	19,885	22.3%
Retail Trade	895	14,634	12.7%
Accommodation and Food Services	827	34,661	11.8%
Construction	689	5,460	9.8%
Other Services, exc. Public Administration	584	3,596	8.3%
Professional and Technical Services	538	4,213	7.6%
Administrative and Waste Services	432	5,067	6.1%
Unclassified	279	350	4.0%
Real Estate and Rental and Leasing	224	1,245	3.2%
Finance and Insurance	217	2,103	3.1%
Wholesale Trade	157	2,206	2.2%
Manufacturing	140	2,391	2.0%
Arts, Entertainment, and Recreation	136	3,174	1.9%
Transportation and Warehousing	114	1,782	1.6%
Agriculture, Forestry, Fishing and Hunting	77	1,300	1.1%
Educational Services	69	679	1.0%
Management of Companies and Enterprises	28	1,336	0.4%
Utilities	20	883	0.3%

In Atlantic County, mainly due to the casino industry, accommodations and food services has a higher employment share compared to state averages.

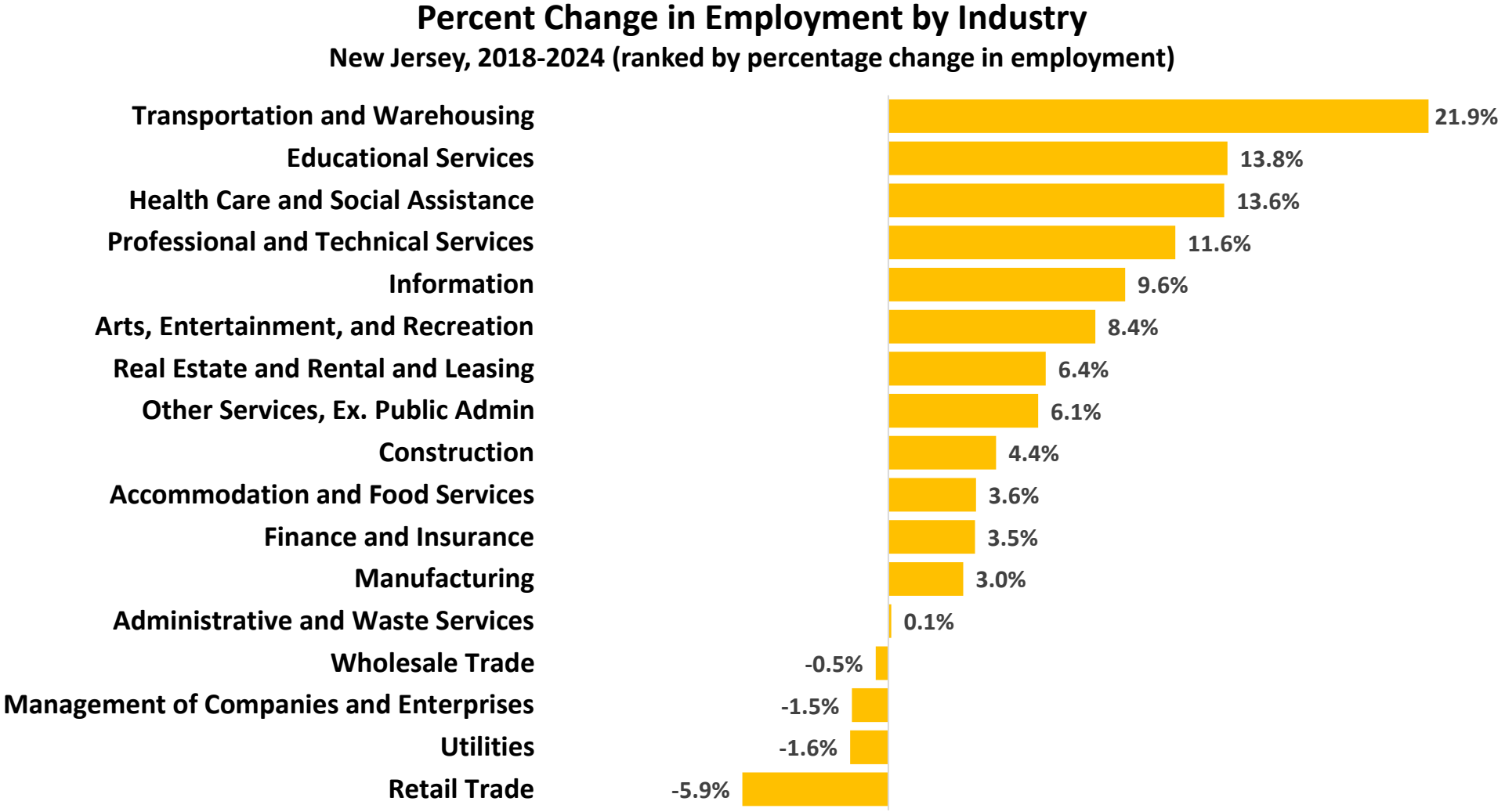
Employment by Private Industries Atlantic County vs. New Jersey, 2024

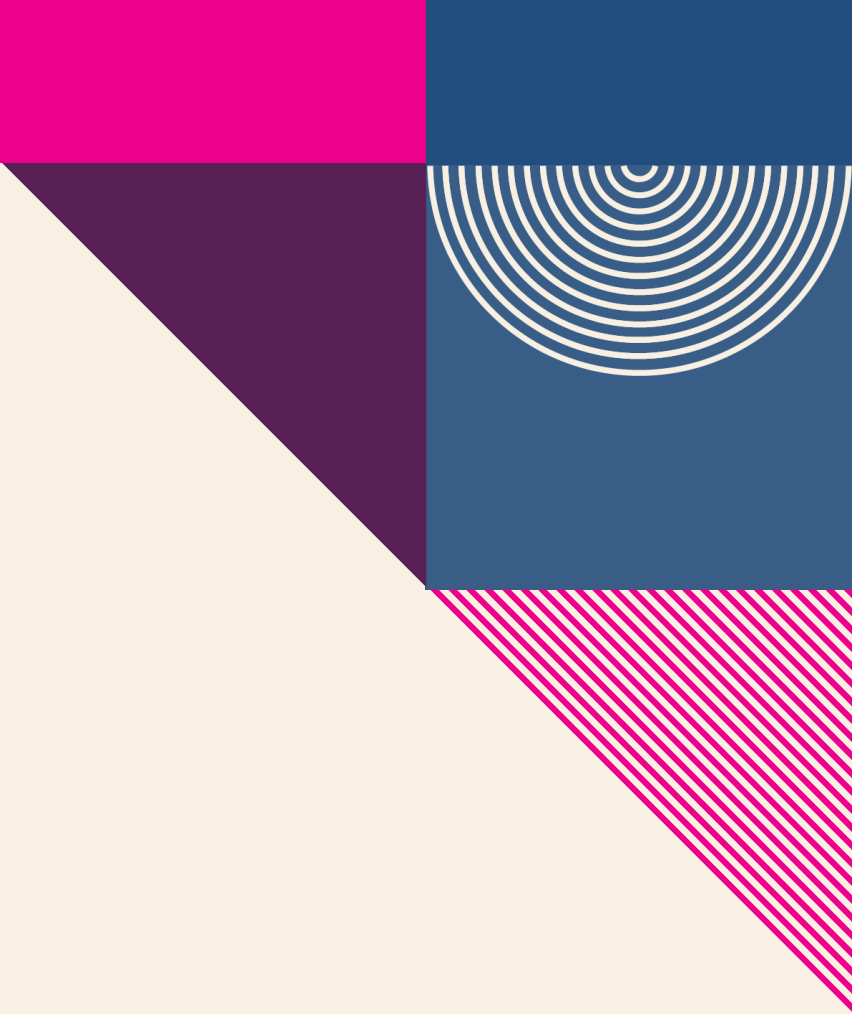
Industry	Atlantic County		New Jersey		Difference between
	Employment	% of Total	Employment	% of Total	
Construction	5,460	5.2%	164,014	4.5%	0.7%
Manufacturing	2,391	2.3%	253,054	6.9%	-4.6%
Wholesale Trade	2,206	2.1%	213,549	5.8%	-3.7%
Retail Trade	14,634	13.9%	427,521	11.6%	2.3%
Transportation and Warehousing	1,782	1.7%	233,943	6.4%	-4.7%
Finance and Insurance	2,103	2.0%	189,987	5.2%	-3.2%
Real Estate and Rental and Leasing	1,245	1.2%	63,263	1.7%	-0.5%
Professional and Technical Services	4,213	4.0%	336,105	9.1%	-5.1%
Management of Companies and Enterprises	1,336	1.3%	82,588	2.2%	-1.0%
Administrative and Waste Services	5,067	4.8%	286,750	7.8%	-3.0%
Educational Services	679	0.6%	90,018	2.4%	-1.8%
Health Care and Social Assistance	19,885	18.9%	656,356	17.8%	1.0%
Arts, Entertainment, and Recreation	3,174	3.0%	73,699	2.0%	1.0%
Accommodation and Food Services	34,661	32.9%	328,905	8.9%	23.9%
Other Services, except Public Administration	3,596	3.4%	144,086	3.9%	-0.5%

Between 2018 and 2024, arts, entertainment and recreation saw the fastest employment growth in Atlantic County, increasing by 58.8%.



Transportation, warehousing, and utilities saw strong growth in New Jersey, expanding by 21.9% from 2018 to 2024.





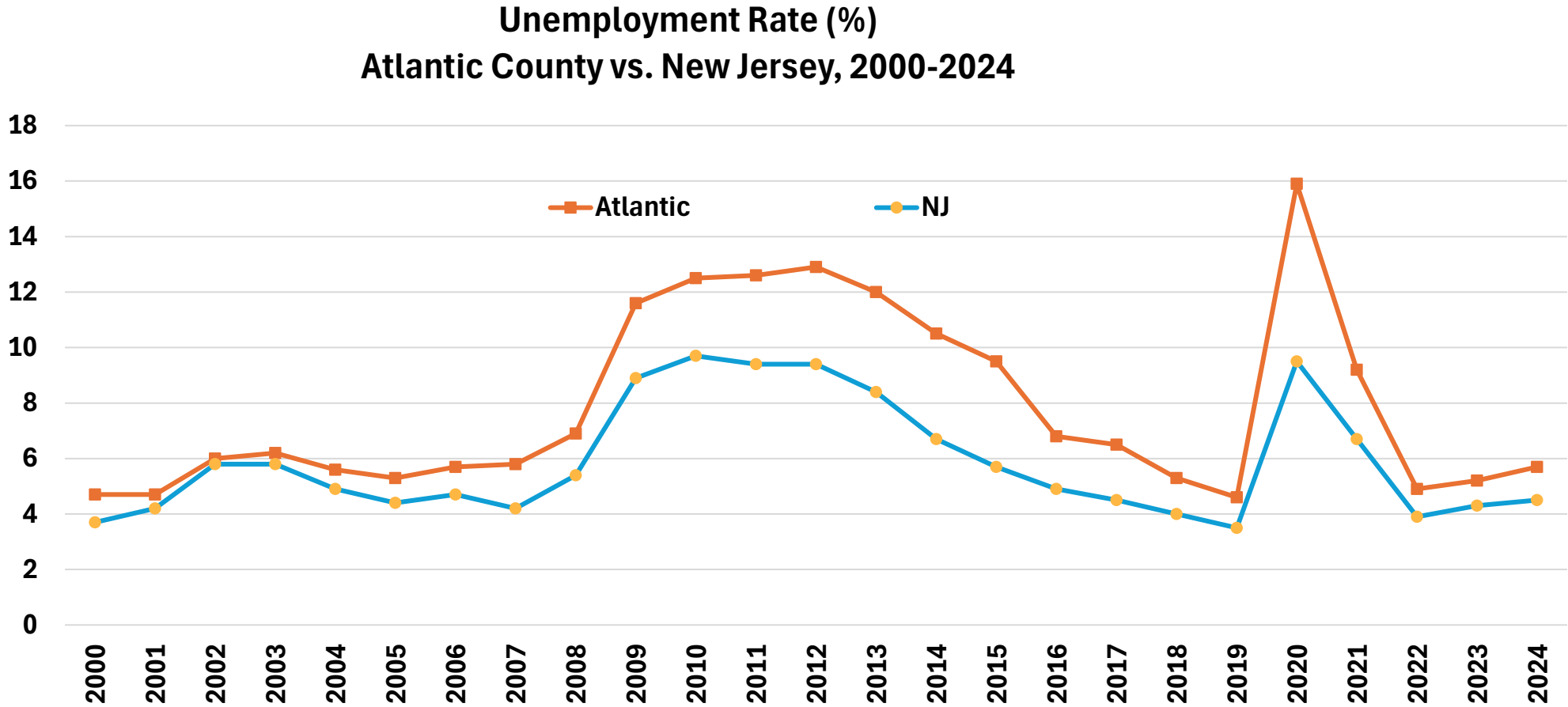
Unemployment Trend

Atlantic County vs. New Jersey

Source: Local Area Unemployment Statistics (LAUS), 2018 and 2024 Annual Averages

The Local Area Unemployment Statistics (LAUS) program produces monthly and annual employment, unemployment, and labor force data for Census regions and divisions, States, counties, metropolitan areas, and many cities, by place of residence.

Unemployment in Atlantic County follows state trends but stays above the New Jersey average due to its seasonal tourism and agriculture industries.





Occupational Employment and Wages

Atlantic County vs. New Jersey

Source: 2024 Occupational Employment and Wage Statistics' Estimates (OEWS), Division of Economic and Demographic Research, June 2025

The wage data published on this page are made possible due to thousands of New Jersey employers who participated in the Occupational Employment and Wage Statistics (OEWS) Survey over the past three years. The data collected in the OEWS Survey provides valuable input for wage comparisons and for identifying trends in emerging or declining occupations—precisely the kind of information needed by both employers, as well as those who are choosing or changing careers.

24.9% of Atlantic County's total employment is concentrated in the top 10 occupations.

**Top 10 Occupations, Ranked by Employment
Atlantic County, 2024**

Occupation	Employment	% of Total Employment	Median Hourly Wage
Waiters and Waitresses	4,430	3.5%	\$17.47
Cashiers	3,580	2.9%	\$15.13
Fast Food and Counter Workers	3,230	2.6%	\$15.50
Home Health and Personal Care Aides	3,150	2.5%	\$17.52
Retail Salespersons	3,120	2.5%	\$16.26
Gambling Dealers	3,050	2.4%	\$15.31
Registered Nurses	2,940	2.3%	\$47.92
Janitors and Cleaners, Except Maids and Housekeeping Cleaners	2,850	2.3%	\$18.47
Security Guards	2,580	2.1%	\$19.00
Cooks, Restaurant	2,380	1.9%	\$20.25
Top 10 Occupations, Total	31,310	24.9%	
All Occupations, Total	125,570	100.0%	\$22.64

Note: OEWS collects the data for 2024.

In New Jersey, the top 10 occupations account for 20% of total employment.

**Top 10 Occupations, Ranked by Employment
New Jersey, 2024**

Occupation	Employment	% of Total Employment	Median Hourly Wage
Home Health and Personal Care Aides	105,460	2.5%	\$17.83
Laborers and Freight, Stock, and Material Movers	101,720	2.4%	\$18.78
Registered Nurses	95,150	2.2%	\$49.39
Cashiers	93,270	2.2%	\$15.96
Retail Salespersons	87,760	2.1%	\$17.13
Fast Food and Counter Workers	86,980	2.0%	\$16.01
Packers and Packagers, Hand	76,060	1.8%	\$20.56
Office Clerks, General	71,140	1.7%	\$23.07
Stockers and Order Fillers	70,780	1.7%	\$17.69
Janitors and Cleaners	67,590	1.6%	\$17.94
Top 10 Occupations, Total	855,910	20.1%	
All Occupations, Total	4,250,430	100.0%	\$27.51

Note: OEWS collects the data for 2024.

Between 2022 and 2032 in Atlantic County, healthcare-related occupational groups are projected to see the largest growth (+1,750).

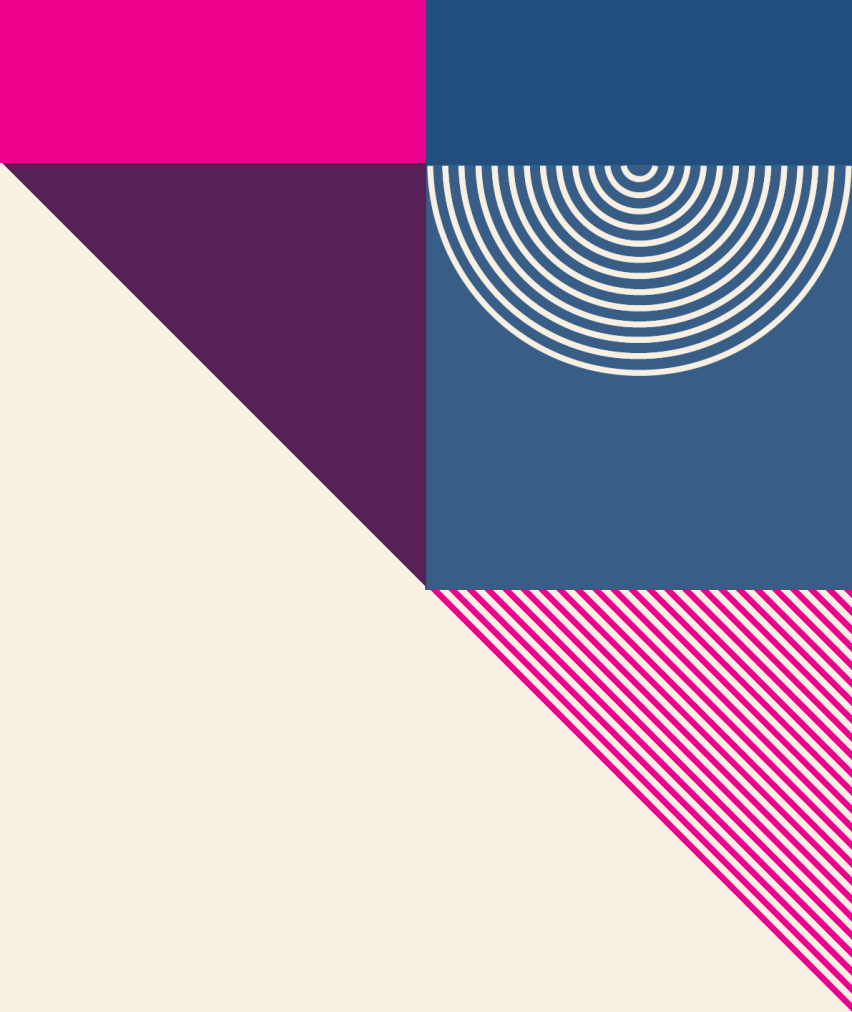
Actual and Projected Employment by Occupational Group, Atlantic County
Top 10 Occupation Groups Ranked by 2032 Employment Projections

Occupational Group	2022 Actual	2032 Projected	Net Change	Percent Change
Food Preparation and Serving Related	27,450	27,850	400	1.5%
Office and Administrative Support	14,800	14,000	-800	-5.4%
Sales and Related	11,850	11,800	-50	-0.4%
Transportation and Material Moving	9,700	10,300	600	6.2%
Healthcare Practitioners and Technical	8,250	9,050	800	9.7%
Educational Instruction and Library	8,600	9,000	400	4.7%
Management	8,300	8,850	550	6.6%
Healthcare Support	6,150	7,100	950	15.4%
Business and Financial Operations	6,150	6,350	200	3.3%
Construction and Extraction	5,050	5,350	300	5.9%

Note: Employment data for Top 15 occupational groups is available in the [Appendix](#)

An abstract geometric design on the left side of the page. It features a dark purple triangle in the top-left corner with a small white circle. Below it is a light gray semi-circle next to a series of concentric blue circles. To the right of these is a blue square. Further down is a pink square with diagonal lines, and below that is a solid pink square. At the bottom are several triangles in shades of purple and pink, some with concentric line patterns. The text "JOB POSTINGS" is positioned to the right of these shapes.

JOB POSTINGS



Job Postings

Atlantic County vs. New Jersey

Source: Lightcast

Lightcast collect raw data on postings from more than 160,000 online sources, then synthesize and interpret those findings to provide meaningful insight in near real time. Job posting analytics can identify supply and demand for workers, skills, and jobs all over the world, as well as important contextual details like compensation trends.

Limitations: One job posting does not necessarily equal one actual job opening. Some companies may post jobs to signal growth to investors or advertise positions in multiple states. Additionally, a decline in job postings doesn't always indicate reduced demand; it could simply mean that companies have already filled their positions and are no longer actively recruiting. We treat this data as directional, offering insights into employer demand rather than exact measurements.



Top 5 Hiring Companies Atlantic County, 2024

- Caesars Entertainment
- AtlantiCare
- MGM Resorts International
- Shore Medical Center
- BAYADA Home Health Care

Top 5 Occupations Atlantic County, 2024

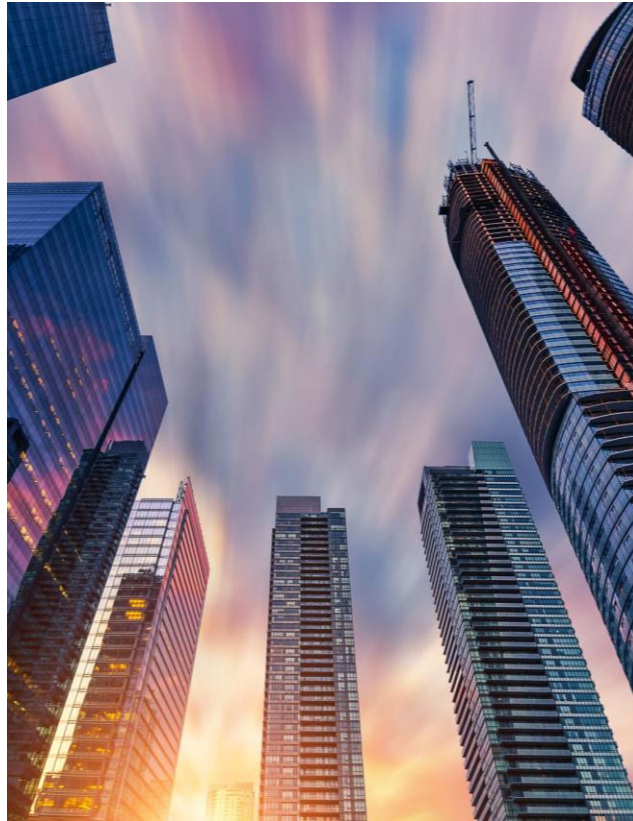
- Retail Salespersons
- Registered Nurses
- First-Line Supervisors of Retail Sales Workers
- Heavy and Tractor-Trailer Truck Drivers
- Customer Service Reps





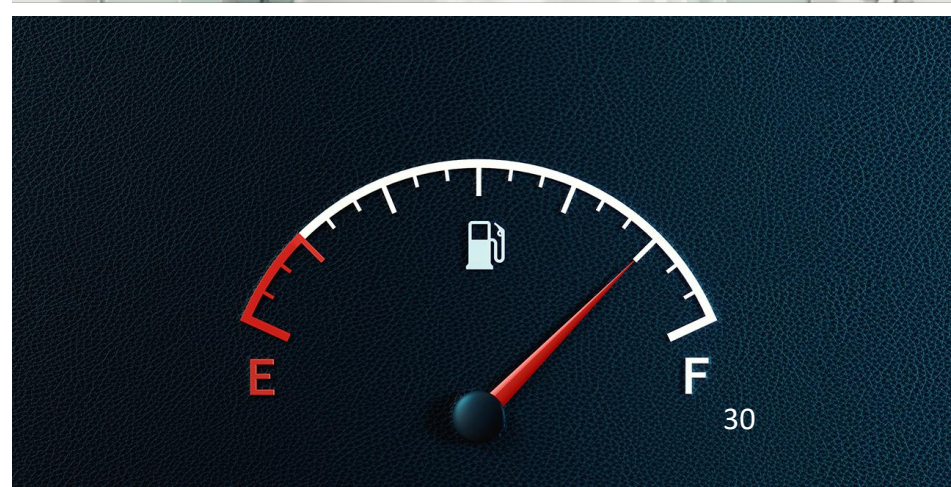
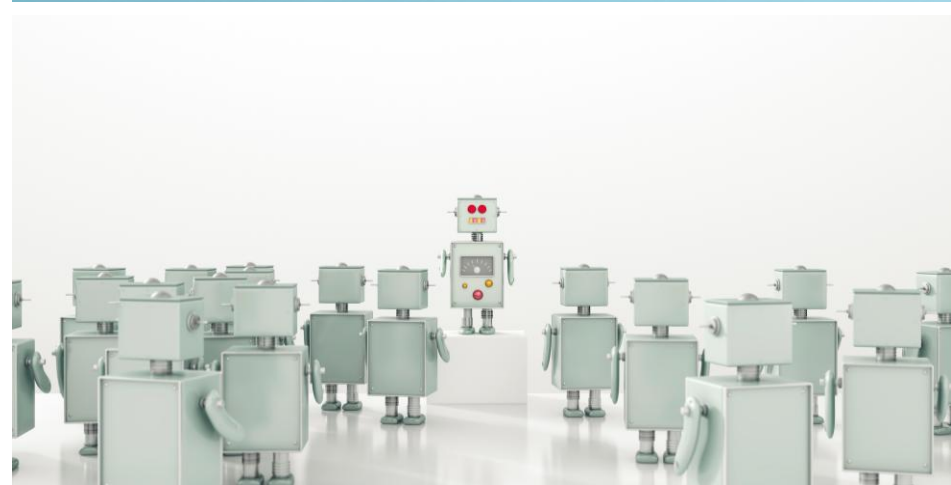
Top 5 Specialized Skills Atlantic County, 2024

- **Merchandising**
- **Nursing**
- **Marketing**
- **Auditing**
- **Restaurant Operation**



Top 5 Software Skills in Atlantic County

- Microsoft Office (e.g., Excel, and PowerPoint)
- Operating Systems (e.g., Linux)
- Programming Language (e.g., SQL, Python, and R)
- Inventory Management Systems
- Salesforce





Top 5 Soft Skills Atlantic County, 2024

- **Customer Service**
- **Communication**
- **Management**
- **Sales**
- **Operations**





Top 5 Certificates in Atlantic County

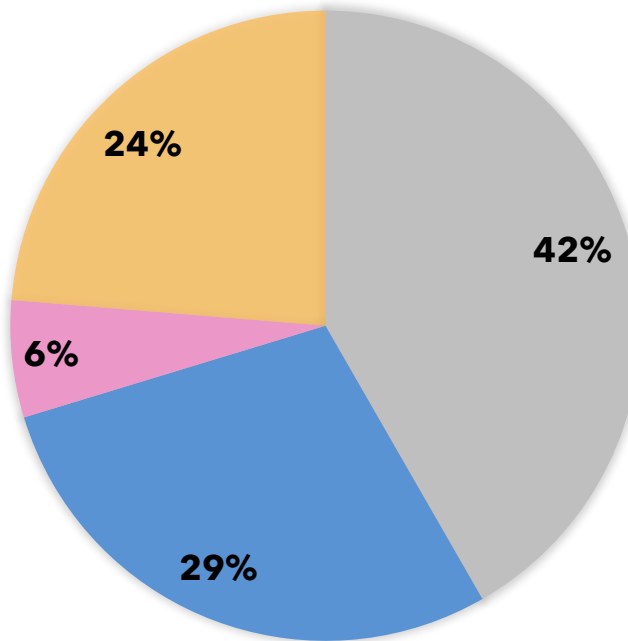
- Valid Driver's License
- Registered Nurse (RN)
- Basic Life Support (BLS) Certification
- Cardiopulmonary Resuscitation (CPR) Certification
- Licensed Practical Nurse (LPN)



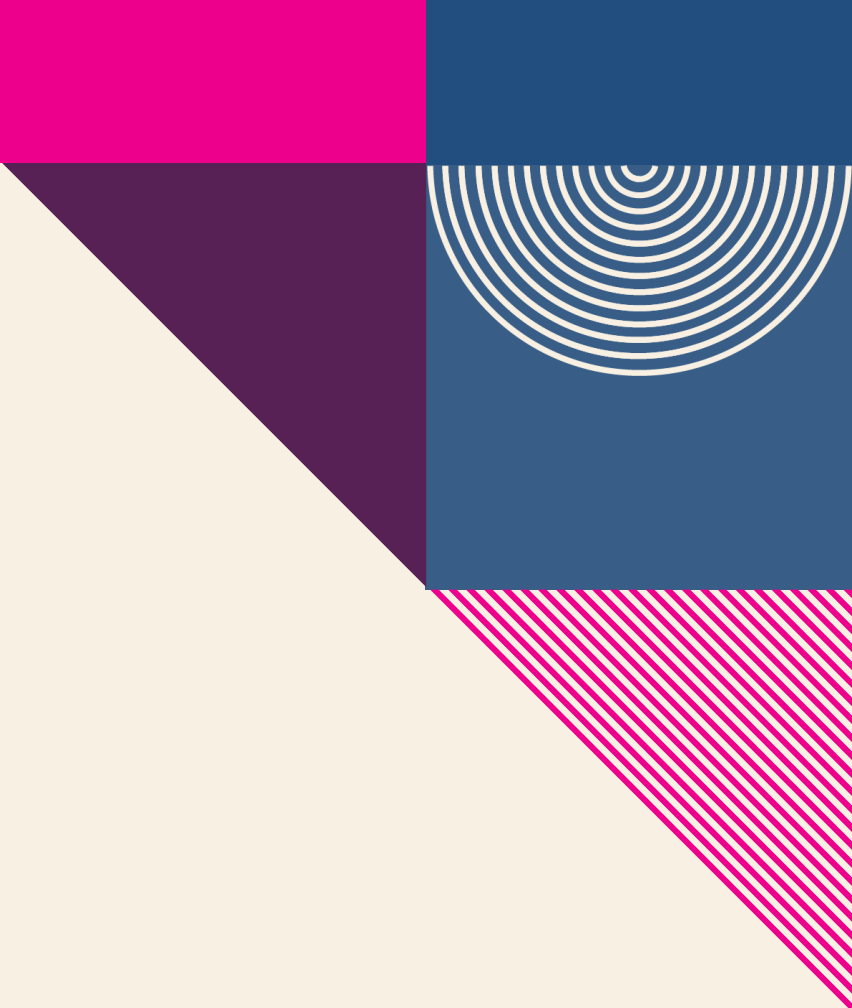
One-quarter of all job postings in Atlantic County require a bachelor's degree or higher.

Job Postings by Educational Attainment
Atlantic County, 2024

■ No education listed ■ High school or GED ■ Associate's degree ■ Bachelor's degree or higher



Note: Bachelor's degree or higher includes Bachelor's Degree, Master. Ph.D. or Professional Degree. While 42% of job postings did not specify educational attainment, this does not necessarily mean there are no requirements for it.



AI-related Job Postings

Atlantic County vs. New Jersey

Source: Lightcast

To identify AI-related job postings, ORI-EDR compiled a curated list of 130 specific terms. A job listing is deemed AI-related if any of these terms appear in the skills section. A job listing is classified as AI-related if any of these terms are present in the skills section. This includes, but is not limited to, terms such as "AI/ML Inference," "Conversational AI," "Machine Learning Algorithms," "Supervised Learning," and "Deep Learning."

Limitations: One job posting does not necessarily equal one actual job opening. Some companies may post jobs to signal growth to investors or advertise positions in multiple states. Additionally, a decline in job postings doesn't always indicate reduced demand; it could simply mean that companies have already filled their positions and are no longer actively recruiting. We treat this data as directional, offering insights into employer demand rather than exact measurements.

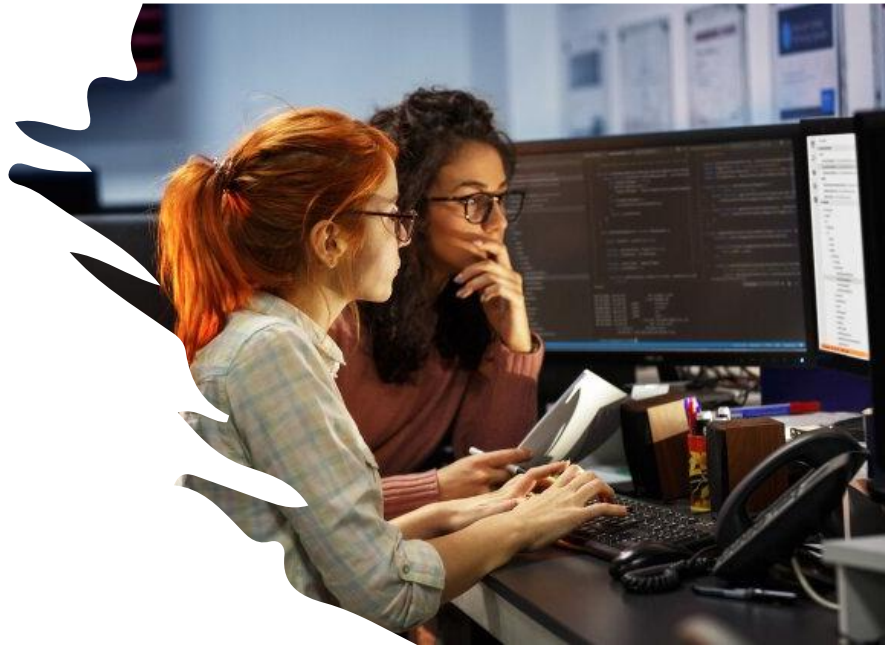
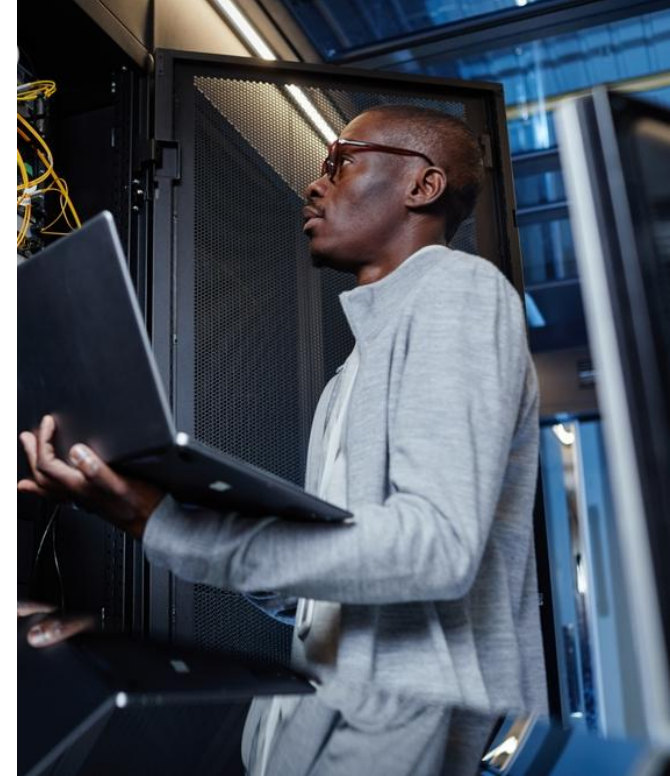


Top 5 AI-related Hiring Companies Atlantic County, 2024

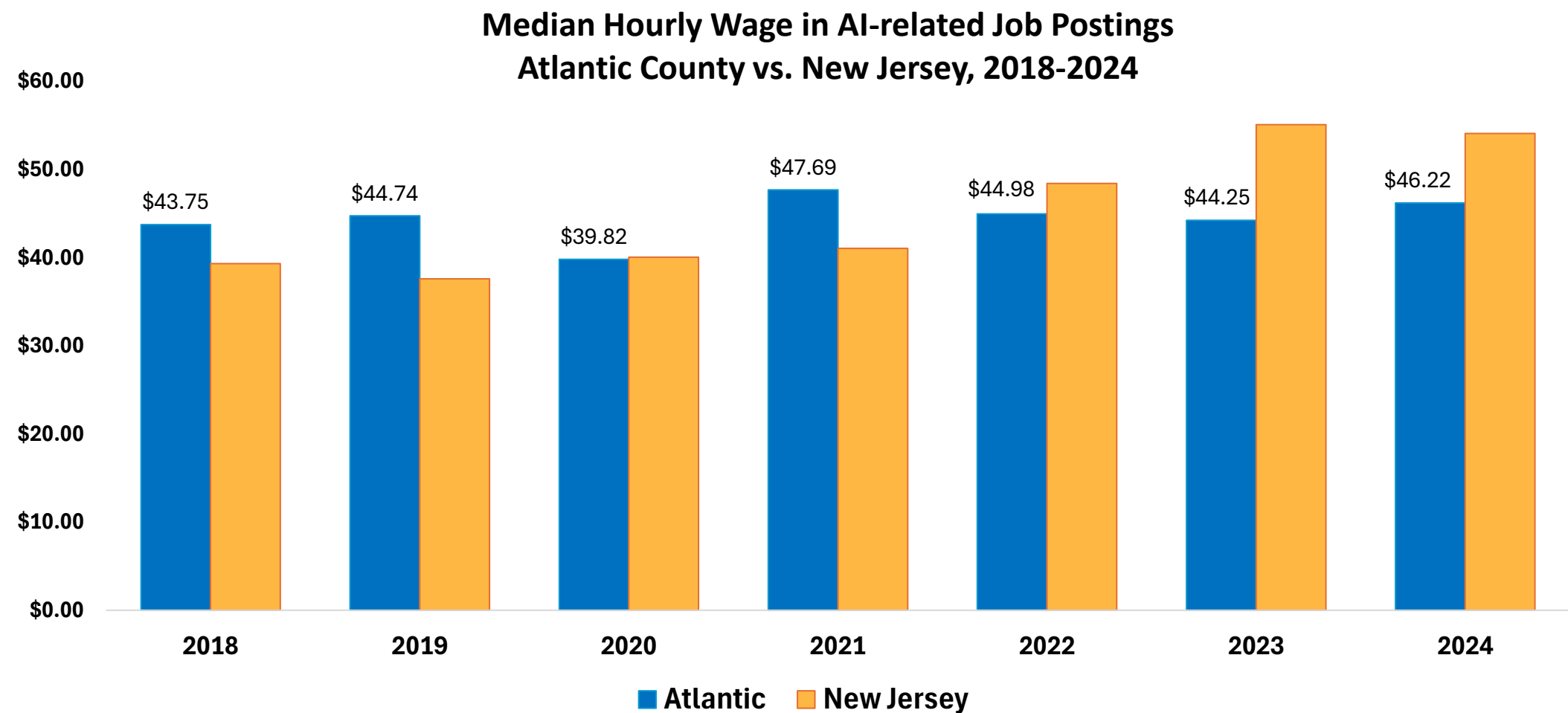
- Arctic Slope Regional Corp.
- United State Department of Transportation
- A3 Technology
- Noblis
- South Jersey Industries

Top 5 AI-related Occupations Atlantic County, 2024

- Software Developers
- Computer and Information Research Scientists
- Computer User Support Specialists
- Data Scientists
- Network and Computer Systems Administrators





In Atlantic County, the median hourly wage for AI-related job postings is higher than the state average in three of the seven time periods.






TAKEAWAYS

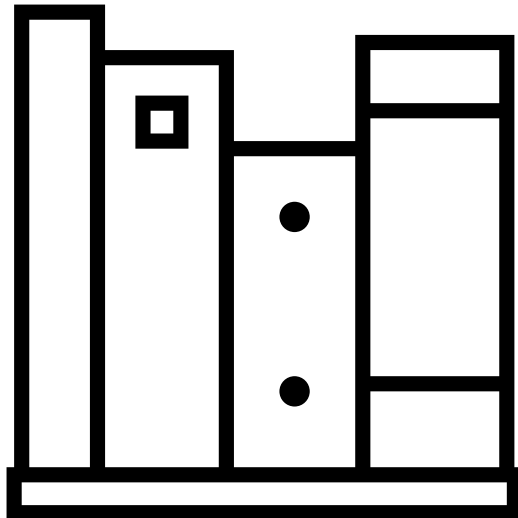
- 
- **Key Economic and Workforce Insights: Atlantic County**
 - **Demographics**
 - Atlantic County's population is older and less diverse than the New Jersey average.
 - Atlantic County's education level is comparable to the state overall, but the proportion of residents with a bachelor's degree or higher is 13.4 percentage points lower than the state average.
 - **Regional Variation**
 - There are differences in economic and housing characteristics across Atlantic County's municipalities.

- 
- **Key Economic and Workforce Insights: Atlantic County (Continued)**
 - **Industry Composition**
 - Over 22% of business establishments are in health care and social assistance.
 - Accommodations and food services and retail trade sectors have higher employment shares in Atlantic County compared to state average.

- 
- **Key Economic and Workforce Insights: Atlantic County (Continued)**
 - **Occupational Demand in the County**
 - **Top Projected Occupations by 2032**
 - Food Preparation and Serving Related
 - Office and Administrative Support
 - Sales and Related
 - Transportation and Material Moving
 - Healthcare Practitioners and Technical

- 
- **Key Economic and Workforce Insights: Atlantic County (Continued)**
 - **Occupational Demand in the County**
 - **Top Occupations by Job Postings**
 - Retail Salespersons
 - Registered Nurses
 - First-Line Supervisors of Retail Sales Workers
 - Heavy and Tractor-Trailer Truck Drivers
 - Customer Service Reps

2025 Report Overview and Subscription Information



This report was prepared by the Office of Research and Information, Division of Economic & Demographic Research. This division collects and disseminates vital data on employers, employees, and population demographics.

2025-2026 NJDOL PUBLICATIONS

- [Real-Time Insights: Analysis of Job Posting Data in New Jersey for 2025](#) (January 2026)
- [Identifying and Tracking Emerging Occupations in New Jersey's Key Sectors](#) (January 2026)
- [New Jersey's Manufacturing Sector](#) (Winter 2025)
- [County Brief: Labor Market Facts](#) (December 2025)
- [Labor Market Spotlight - Celebrating New Jersey's Veterans](#) (Issue No. 28, Volume 3: November 2025)
- [Labor Market Spotlight - New Jersey's Waterways Help Keep the Economy Flowing](#) (Issue No. 27, Volume 3: October 2025)
- [New Jersey Employment Situation](#) (September 2025)
- [Job Openings and Labor Turnover Survey \(JOLTS\)](#) (August 2025)
- [New Jersey Building Permits](#) (August 2025)
- [New Jersey's Life Sciences Sector](#) (Fall 2025)
- [Labor Market Spotlight - The Industries Powering New Jersey's Special Moments](#) (Issue No. 26, Volume 3: August 2025)
- [New Jersey's Health Care Sector](#) (June 2025)
- [New Jersey Business Employment Dynamics](#) (May 2025)
- [Survey of Occupational Injuries and Illnesses \(SOII\)](#) (April 2025)
- [Labor Market Spotlight - Fortune 500 Companies](#) (Issue No. 25, Volume 3: March 2025)
- [Labor Market Spotlight - Young Adult Workforce](#) (Issue No. 24, Volume 3: January 2025)

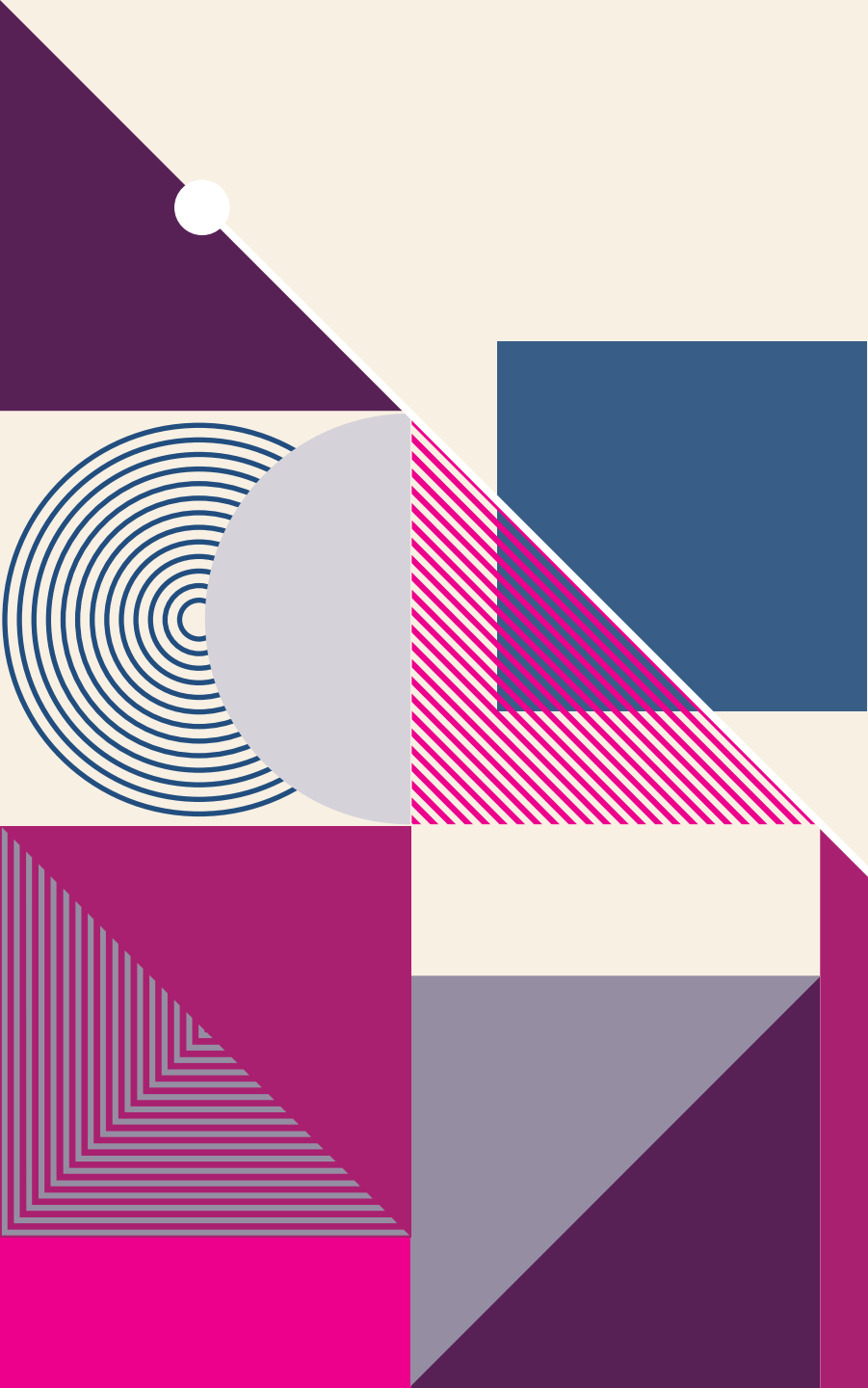
JOIN OUR LIST

Link: nj.gov/labor/subscribetoori





THANK YOU!



APPENDIX

Actual and Projected Employment by Occupation Group, Atlantic County
Top 15 Occupations Ranked by 2032 Employment Projections

Occupational Group	2022 Actual	2032 Projected	Net Change	Percent Change
Food Preparation and Serving Related	27,450	27,850	400	1.5%
Office and Administrative Support	14,800	14,000	-800	-5.4%
Sales and Related	11,850	11,800	-50	-0.4%
Transportation and Material Moving	9,700	10,300	600	6.2%
Healthcare Practitioners and Technical	8,250	9,050	800	9.7%
Educational Instruction and Library	8,600	9,000	400	4.7%
Management	8,300	8,850	550	6.6%
Healthcare Support	6,150	7,100	950	15.4%
Business and Financial Operations	6,150	6,350	200	3.3%
Construction and Extraction	5,050	5,350	300	5.9%
Personal Care and Service	4,900	5,300	400	8.2%
Building and Grounds Cleaning and Maintenance	4,750	4,850	100	2.1%
Installation, Maintenance, and Repair	4,150	4,350	200	4.8%
Protective Service	3,600	3,550	-50	-1.4%
Production	3,050	3,000	-50	-1.6%